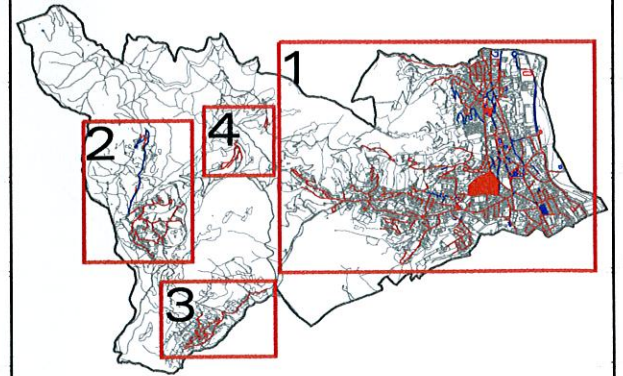
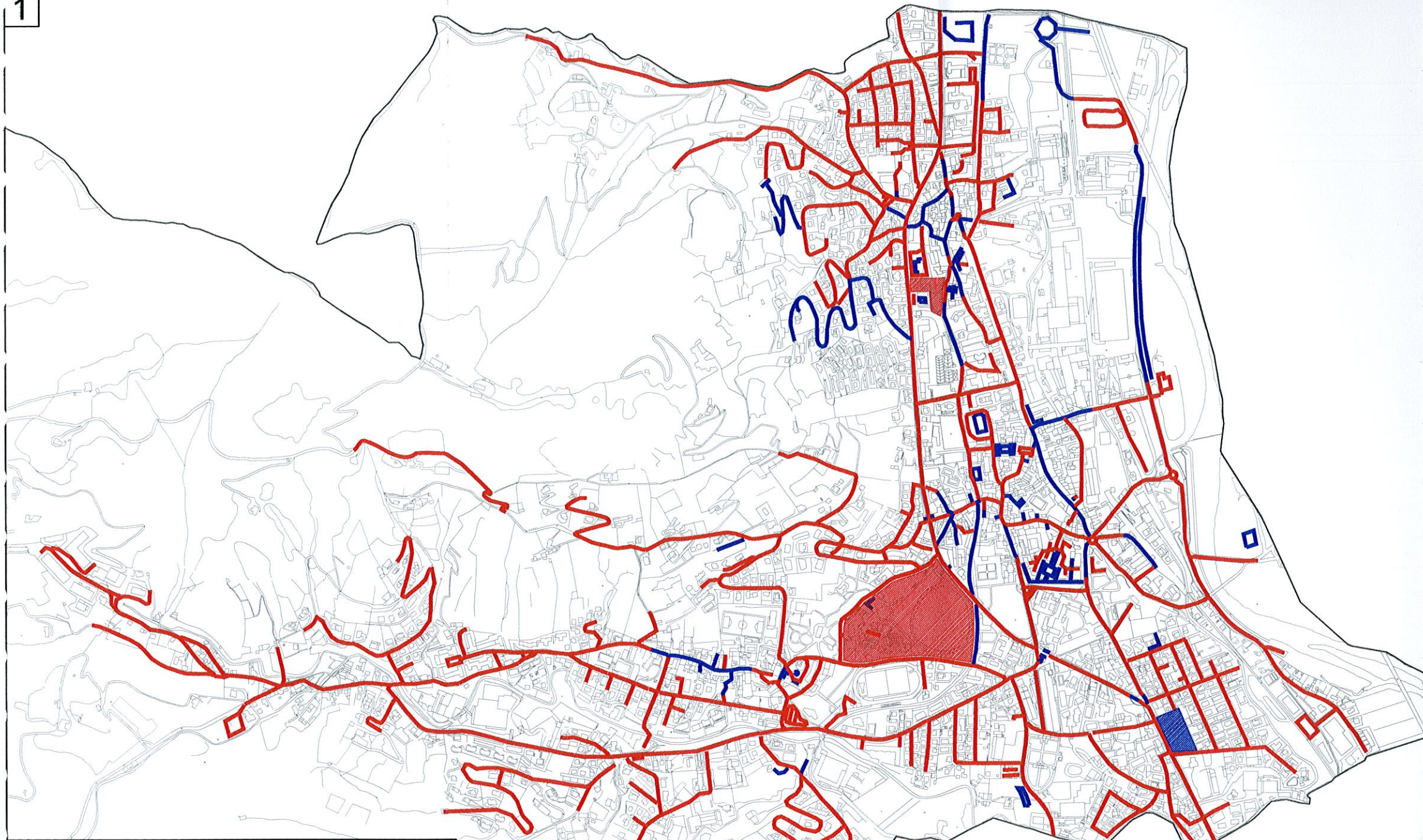


1







QUADRO D'INSIEME



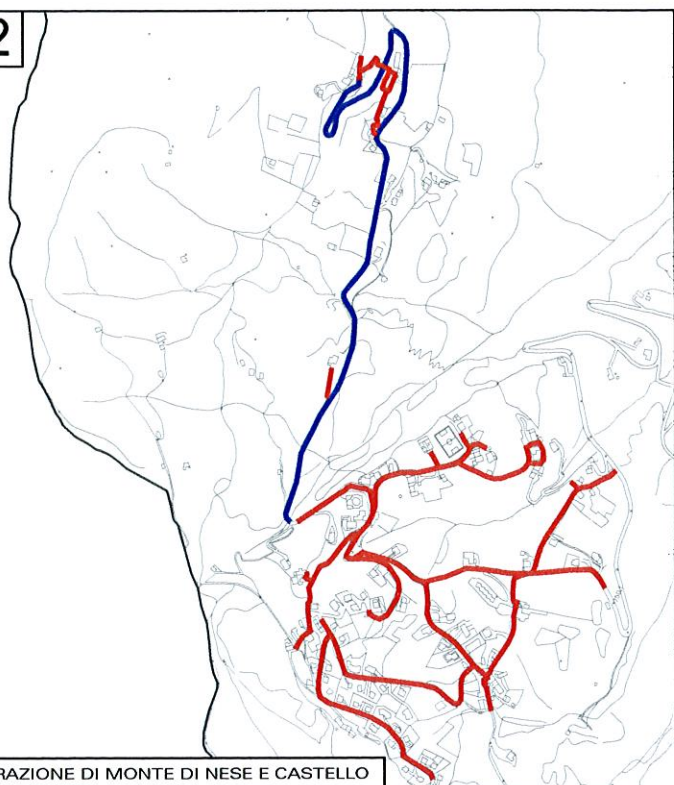
IMPIANTI ELETTRICI  
AUTOMAZIONI INDUSTRIALI  
Corle (Bg) Tel. 035-432061  
www.elettiricazizzi.com

TAVOLA N° 8

CONFORMITA' ALLA LEGGE REGIONALE 38/2004

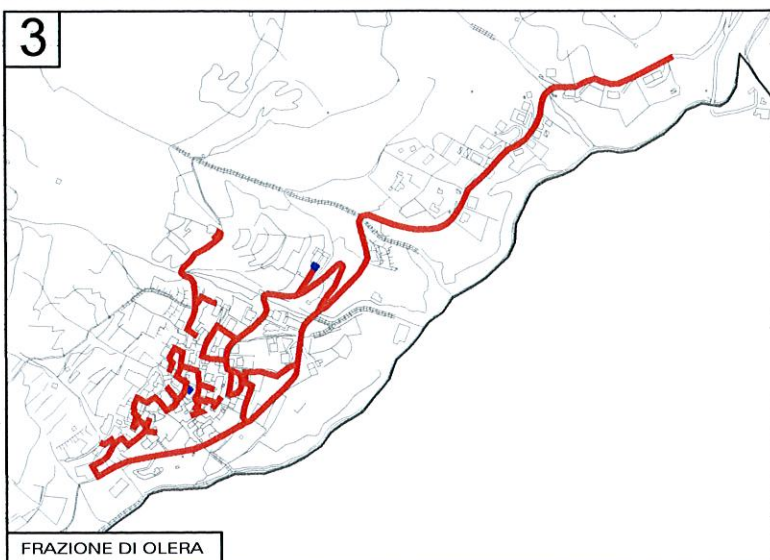
	NON CONFORME
	CONFORME
	AREA VERDE DOTATA DI IMPIANTO DI ILLUMINAZIONE NON CONFORME
	AREA VERDE DOTATA DI IMPIANTO DI ILLUMINAZIONE CONFORME

2



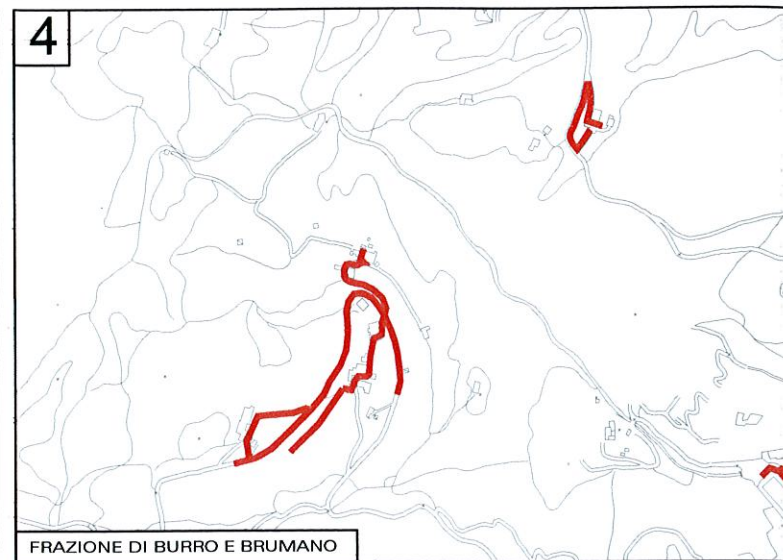
FRAZIONE DI MONTE DI NESE E CASTELLO

3



FRAZIONE DI OLERA

4



FRAZIONE DI BURRO E BRUMANO

